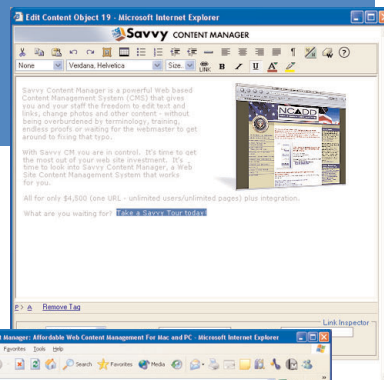


Affordable, feature-rich web content management

Savvy CM™ Professional is the newest way companies, schools, institutions and organizations do business on the web. Savvy CM™ Professional is an easy-to-use, easy to implement, and affordable content management solution.

Savvy CM™ Professional includes a powerful, browser-based editor:

The Savvy CM™ Professional editor allows anyone to create new web content without knowing anything about sophisticated web applications or computer code. It's just like using a typical word processing program and is easily installed into your web site and runs on your browser, like Explorer. You and your team can access it from any location. You no longer need to pay your web professional to update your web site. This also eliminates delays in getting updates done. Important information is updated and enhanced instantly. Again, anyone on your staff can maintain your web site.



Savvy CM Professional was created for mid to large size organizations that need multiple users.

Savvy CM Professional Benefits:

- Unlimited Users
- Unlimited Templates
- MS Access and MS SQL Database Support
- Powerful Event Calendars
- Content Search and Retrieval
- Workflow Approval and E-mail Notification
- Ability to Add Pages
- Ability to Remove Pages
- Access Rights Assigned to Users
- Extendable with Custom Code
- Copy and Paste from any Application
- Create Hyperlinks
- Metadata Support
- Insert Tables and Images

Features Include:

Editor Support for Mac OS X, Windows and Linux:

Savvy CM™ Professional supports any Mozilla 1.4 compatible browser. No other similarly based web CMS can offer full MAC OSX and Windows support. Savvy CM™ Professional is Netscape and IE friendly.

Real Page Names:

With Savvy CM™ Professional your pages are named in a human readable and search engine friendly way. Each page of your site has a name that you give it. Name your pages as appropriate for your site and the intent of that page, instead of having the software name your pages for you.

Extendable with Custom Code: Savvy CM™ Professional allows you to add or extend features with additional custom code.



SAVVY CONTENT MANAGER™ PROFESSIONAL

End User System Requirements

Supported Browsers (for client computer)

- For Viewing: All major browsers (Netscape Navigator version 3.0 or higher, Microsoft Internet Explorer version 3.0 or higher, and Mozilla)
- For Editing: Internet Explorer 6.0; Netscape Navigator 7.1; Firefox 1.4

Computer Operating System:

- MS Windows®, NT/2000/XP
- MAC OS X
- Linux

Server & Development Requirements

Web Development Tools:

- Any HTML editor (e.g. Macromedia Dreamweaver, Homesite, BBEdit, NotePad)

Web Application Servers:

- Macromedia ColdFusion MX 6.1 Professional Server

Web Server:

- Microsoft Internet Information Server (IIS) 5.0 or higher
- Apache

Databases Supported:

- MS Access
- MS SQL 7.0/2000
- MySQL

Server Operating System:

- Win 2000/2003
- Linux (2005)

Pricing and Licensing*

Savvy CM™ Professional

1 - 5 Users	\$1,350
6 - 10 Users	\$2,250
11 - 20 Users	\$3,300
21 - 50 Users	\$5,625
Unlimited Users	\$9,000

* Ask about our education and non-profit pricing.

More Information:

To learn more about Savvy CM™ and to take a tour visit:
<http://www.besavvy.com>



www.besavvy.com

savvy@besavvy.com

40 Bridge Street, Portsmouth, NH 03801

Phone: (U.S. Toll Free): 866.870.6358

(Outside U.S.): 603.766.5560

Facsimile: 603.427.0938