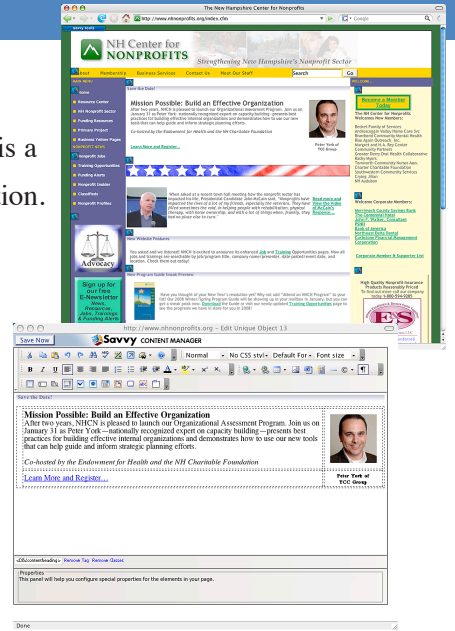


# Affordable, feature-rich web content management

**Savvy CM™ Professional** is the best tool for companies, schools, institutions and organizations to power their websites. Savvy CM™ Professional is a proven, easy-to-use, easy to implement, and affordable content management solution.

**Savvy CM™ Professional features a powerful, browser-based editor:**

The Savvy CM™ Professional editor allows anyone to create new or update existing web content without knowing anything about sophisticated web applications or computer code. It's just like using a typical word processing program and is easily installed into your website and runs on your browser. You and your team can access it from any location. You no longer need to pay additional fees to update your website. This also eliminates delays in getting updates done. Important information is updated and enhanced instantly. Again, anyone on your staff can maintain your website.



## Savvy CM Professional Benefits:

- Unlimited Templates and Pages
- Powerful Event Calendars
- Content Search and Retrieval
- Workflow Approval and E-mail Notification
- Ability to Add and Remove Pages
- Rights Assigned to Users & Groups
- Extendable with Custom Code
- Metadata Support
- Scheduled Content Publication
- Scheduled Content Expiration

## Features Include:

**Editor Support for Mac OS X, Windows and Linux:**

Savvy CM™ Professional supports any Mozilla 1.4 compatible browser. Savvy CM™ plays nicely with all operating systems.

**Real Page Names:** With Savvy CM™ Professional your pages are named in a human readable and search engine friendly way. Each page of your site has a name that you give it. Name your pages as appropriate for your site and the intent of that page, instead of having the software name your pages for you.

**Extendable with Custom Code:** Savvy CM™ Professional allows you to add or extend features with additional custom code and easily integrate third party applications such as shopping carts, blogs, email subscriptions and more.



# SAVVY CONTENT MANAGER™ PROFESSIONAL

## End User System Requirements

### Supported Browsers (for client computer)

- For Viewing: All major browsers (Netscape Navigator version 3.0 or higher, Microsoft Internet Explorer version 3.0 or higher, and Mozilla)
- For Editing: Internet Explorer 7.0; Netscape Navigator 7.1; Firefox 1.4

### Computer Operating System:

- MS Windows®, NT/2000/XP
- MAC OS X
- Linux

## Server & Development Requirements

### Web Development Tools:

- Any HTML editor (e.g. Dreamweaver, Homesite, BBEdit, NotePad, CFEclipse)

### Web Application Servers:

- Macromedia ColdFusion MX 8.0 Professional Server or higher

### Web Server:

- Microsoft Internet Information Server (IIS) 5.0 or higher
- Apache

### Databases Supported:

- MS SQL 7.0/2000/2005
- MySQL

### Server Operating System:

- Win 2000/2003
- Linux
- Mac OS X

## Pricing and Licensing\*

### Savvy CM™ Professional

1 - 5 Users	\$1,550
6 - 10 Users	\$2,550
11 - 20 Users	\$3,650
21 - 50 Users	\$6,250
Unlimited Users	\$9,900

\* Ask about our education and non-profit pricing.

### More Information:

To learn more about Savvy CM™ and to take a tour visit:  
[www.besavvy.com](http://www.besavvy.com)



[www.besavvy.com](http://www.besavvy.com)

[savvy@besavvy.com](mailto:savvy@besavvy.com)

621 Islington St  
Suite A  
Portsmouth, NH 03801

Phone: (U.S. Toll Free): 866.870.6358  
(Outside U.S.): 603.766.5560  
Fax: 603.427.0938